

Encouraging Active Schools

2015 OPPORTUNITIES FOR PHYSICAL ACTIVITY AT SCHOOL SURVEY



Supports for physical activity and sport

The 2015 Opportunities for Physical Activity at School Survey asked school administrators about the provision of concrete supports to encourage participation in physical activity, including financial assistance and the provision of late busing to access after school programming. This bulletin summarizes the findings in this regard in relation to school and community characteristics.

Financial assistance and fees

The majority of schools administrators (87%) indicate that their school or school community offer financial assistance to students who are unable to pay. That being said, 78% of schools require students or their families to be responsible for at least part of *admission* fees related to physical activity, 73% say that students/families are responsible for at least part of *transportation* related fees, and 45% require students/families to be responsible for at least part of *equipment* related fees. There are generally very few significant regional differences related to fees, however, Quebec schools are less likely than the national average to indicate that the school or school community provides financial assistance to students who are unable to pay.

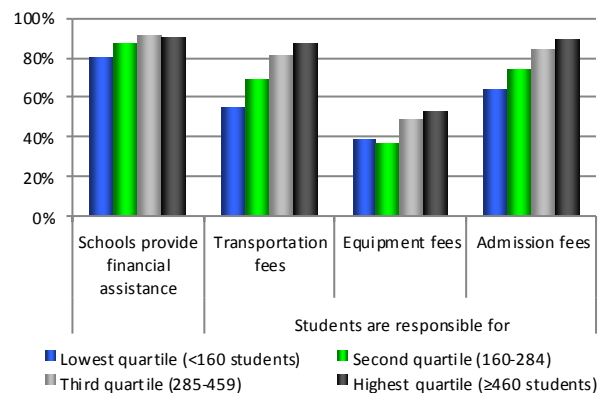
School characteristics

The smallest populated schools are less likely than mid- to larger schools to indicate that they provide financial assistance to students who are unable to pay for the physical activity opportunities. There is a general increase in the proportion of schools who indicate that they require students and their families to pay, at least in part, for *transportation*, *equipment* and *admission* fees with increasing student population size.

Compared to the average, relatively fewer comprehensive schools (kindergarten to grade 12) say that they provide financial assistance to students who are unable to pay or expect students/families to contribute in part to *transportation* related fees.

FIGURE 1

Financial assistance and fees by school population size



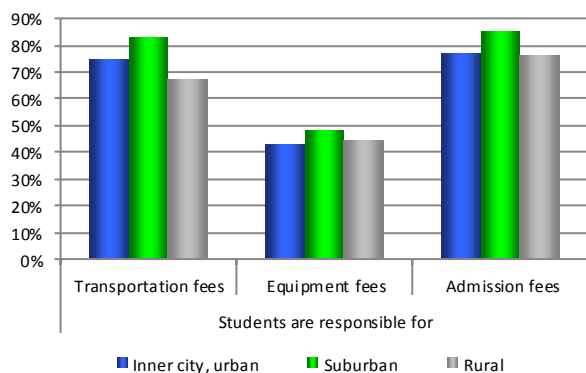
Opportunities for Physical Activity at School Survey, 2015, CFLRI

A greater proportion of secondary schools and schools comprised of a combination of middle and secondary grades indicate that they require students/families to contribute in part to *transportation*, *equipment* and *admission* fees. Moreover, elementary schools are less likely than the average to indicate that students/families are responsible for *admission* fees related to physical activity. Relatively more public schools than non-public schools say that they provide financial assistance to students who are unable to pay for the physical activity opportunities.

Community characteristics

Compared to the average, schools located in the smallest communities are less likely to report that they offer financial assistance to students who are unable to pay, or to expect students and families to be responsible in part for *transportation* or *admission* related fees. Schools located in a suburban environment are most likely to say that they require students and families to be responsible in part for *transportation* and *admission* related fees.

FIGURE 2
Financial assistance and fees by school setting



Opportunities for Physical Activity at School Survey, 2015, CFLRI

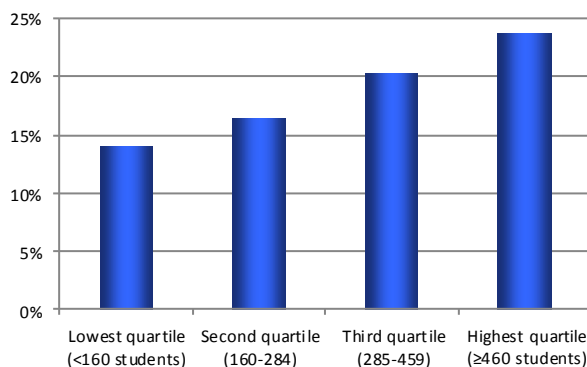
Late transportation encouraging participation

One in five schools (19%) has provided late busing during the year so that students can participate in after school physical activity programming. Schools located in Quebec are more likely than the average to provide late busing after school.

School characteristics

The largest populated schools are more likely than the smallest to provide late busing so that students can participate in after school physical activity programming. Schools with a combination of elementary and middle grades are less likely, whereas those with a combination of middle and secondary grades are more likely to provide late busing.

FIGURE 3
Late busing by student population size



Opportunities for Physical Activity at School Survey, 2015, CFLRI

Community characteristics

Schools located in mid-sized communities (10,000 to 74,999 residents) are more likely to provide late busing than schools located in the smallest communities.

CANADIAN FITNESS & LIFESTYLE RESEARCH INSTITUTE

201-185 Somerset Street West • Ottawa, ON K2P 0J2 • (613) 233-5528 • info@cflri.ca • http://www.cflri.ca/



Production of this bulletin has been made possible through a financial contribution from Sport Canada, the Interprovincial Sport and Recreation Council and the support of Physical and Health Education Canada. The views expressed herein do not necessarily represent the views of these agencies.