

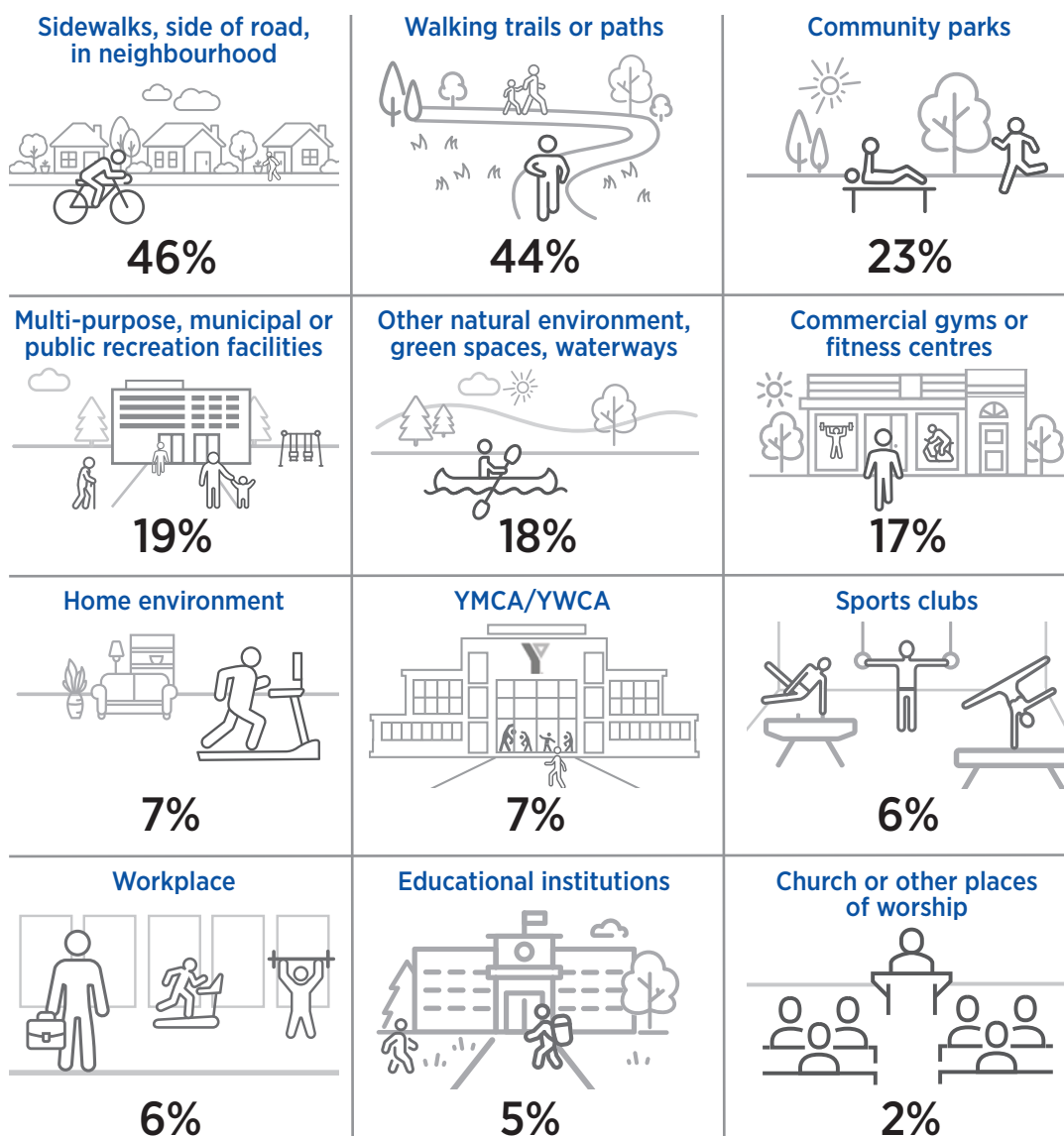
Spotlight Series

A focus on sport, physical activity and recreation

Community settings for sport, physical activity, and recreation

This infographic provides findings from the 2024 *Physical Activity and Sport Survey* by Leger in collaboration with the Canadian Fitness and Lifestyle Research Institute.

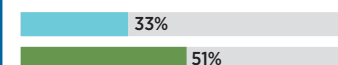
Preferred community setting to be active



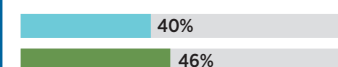
Preferred community setting to be active by sport participation*

■ Sport participant ■ Non-participant

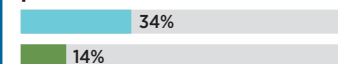
Sidewalks, side of road, in neighbourhood



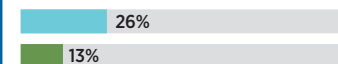
Walking trails or paths



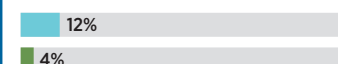
Multi-purpose, municipal or public recreation facilities



Commercial gyms or fitness centres



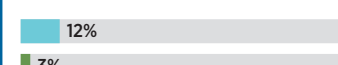
YMCA/YWCA



Sports clubs



Educational institutions



*in past year



Canadian Fitness and Lifestyle Research Institute

230-2733 Lancaster Rd., Ottawa, ON K1B 0A9
www.cflri.ca

Production of this resource has been made possible through a financial contribution from the Government of Canada. The views expressed herein do not necessarily represent the views of this agency.

© 2024 Canadian Fitness and Lifestyle Research Institute.